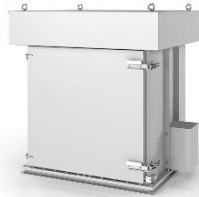


# AMT MATADOR

## bag-type-filter with mechanical cleaning



AMT 1



AMT 3



AMT 5



AMT 7

### Funktional Description

The >>cam<< sitting on the motor shaft off the blow-off motor displaces a blow-off cleaning comb, which accommodates the filter bags in its in-between spaces, in quickly oscillating swinging movements. This produces a kind of >>rug beating effect<< where the filter bag is inserted. The suction or pressure operation can be resumed after completing this cleaning step.

Dust applies itself to the filter bags from the outside. The blow-off process is only introduced after the suction process is completed, once the crude gas no longer flows through the filtration chamber. The blow-off process takes approx 20-30 seconds.

The integrated fan is put into operation by pressing the >>on<< button. The next blow-off phase is initiated by pressing the >>off<< button. The blow-off motor starts up automatically after a brief delay and is under voltage depending on time. The next suction cleaning process starts again by pressing the >>on<< button. Various standard control units are available to regulate the varying control voltages.

The filter elements can be installed vertically; the connections for the crude and pure gas are freely selectable. The emitted acoustics in the AMT Matador can be reduced to <75(dB(A)) by mounting a suitable soundproof hood.

#### Matador AMT

The Matador filter is particularly suitable for all discontinuous processes with reduced dust loads. Here large filter surfaces are implemented on the smallest volume.

#### Application in various industrial sectors

- Bulk Handling / Powder Technology
- Food industry
- Chemical industry
- Pharmaceutical Industry
- blasting equipment / painting
- Wood-processing industry
- stones, earth, cement etc.

#### Advantages

- Maximum filter performance
- Compact design
- Built-in fan + Silencers
- Customer-specific version
- Low maintenance

R&R BETH FILTRATION

P.O Box 43054 Atlanta, GA 30336 USA

Tel: +1 (251) 243-7039

Fax: +1 (251) 243-0004

e-mail: office@rr-bethfiltration.com

# AMT MATADOR

## bag-type-filter with mechanical cleaning

### Layout guidelines

Calculating the required filtering area:

Cotton weave:

$$A_{\text{Filter}} [\text{m}^2] = \text{air amount} [\text{m}^3/\text{h}]/100$$

Polypropylen/Polyester needled felt:

$$A_{\text{Filter}} [\text{m}^2] = \text{air amount} [\text{m}^3/\text{h}]/75$$

Use of filter media	Pure gas content		Grain sizes		Dust volume
Cotton weave	< 20 mg/m <sup>3</sup>		> 0,5 µm		< 500 g/m <sup>3</sup>
Polypropylen/Polyester needled felt, standard	< 10 mg/m <sup>3</sup>		> 0,5 µm		< 500 g/m <sup>3</sup>
	Typ 10	Typ 14	Typ 22	Typ 30	Typ 40
Filter area [m <sup>2</sup> ]	10	14	22	30	40
Fan	Air flow [m <sup>2</sup> ]	Total pressure [Pa]	Output [kW]	Sound Level [dB(A)]	
AVR-1	900	2.250	1,5	< 80	
AVR-2	1.600	2.400	2,2	< 82	
AVR-3	2.400	2.400	3	< 83	
AVR-4	3.600	2.250	4	< 85	

### De dusting motor

Control	Voltage:	Frequency:
	230 V	AC
	110 V	AC
	24 V	DC/AC

### Dimensions/Measurements

	Typ 10	Typ 14	Typ 22	Typ 30	Typ 40
Width [mm]	800	800	970	1.106	1.106
Depth [mm]	800	800	970	970	970
height [mm]	1.706	1.846	1.924	1.926	2.216
height icl fan [mm]	2.202	2.342	2.470	2.574	2.864
weight icl fan [kg]	295	320	400	430	460
Height type 3 [mm]	953	1.093	1.169	1.174	1.460
Weight type 3 [kg]	100	110	140	160	185
Geight typ 4 [mm]	1.460	1.600	1.725	1.830	2.120
Weight type 4 [kg]	150	160	190	235	240
Height type 5 [mm]	2.410	2.550	2.675		
Weight type 5 [kg]	180	190	240		
Height type 6 [mm]	950	1.130	1.100		
Weight type 6 [kg]	85	95	115		

R&R BETH FILTRATION

P.O Box 43054 Atlanta, GA 30336 USA

Tel: +1 (251) 243-7039

Fax: +1 (251) 243-0004

e-mail: office@rr-bethfiltration.com